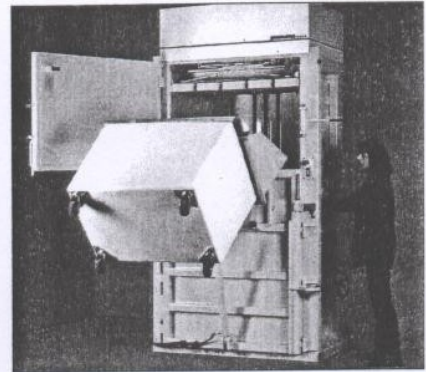
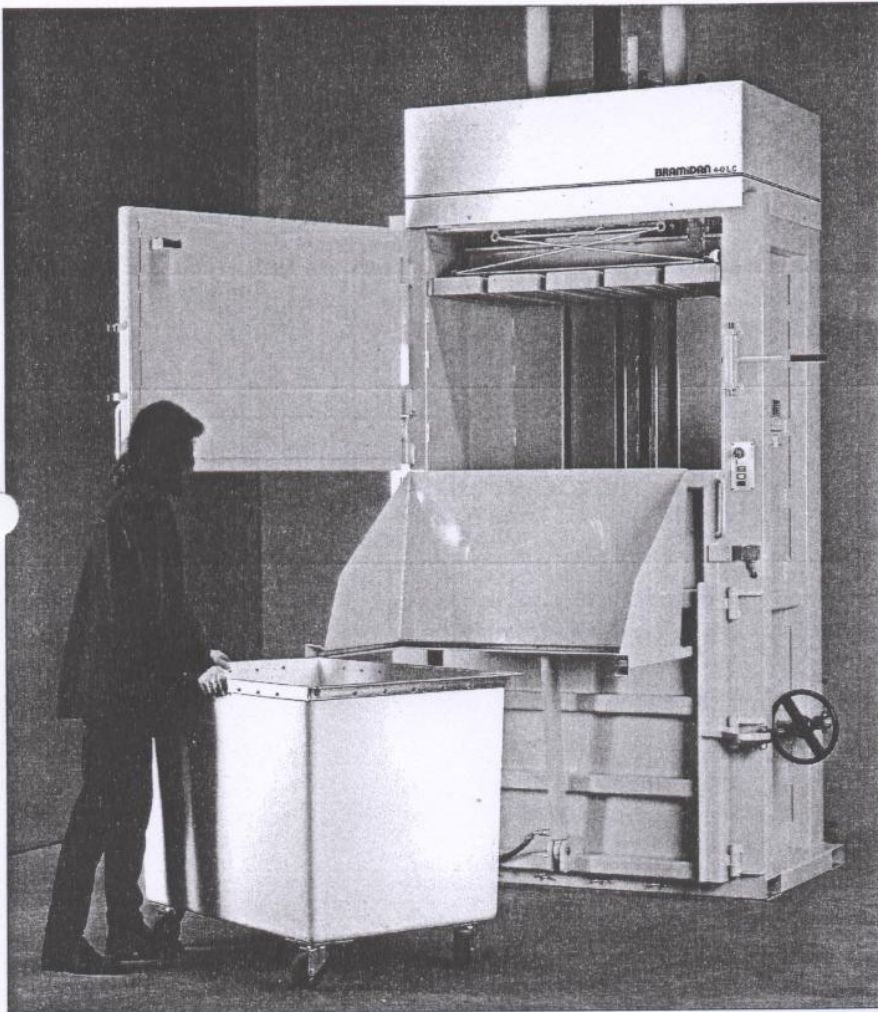
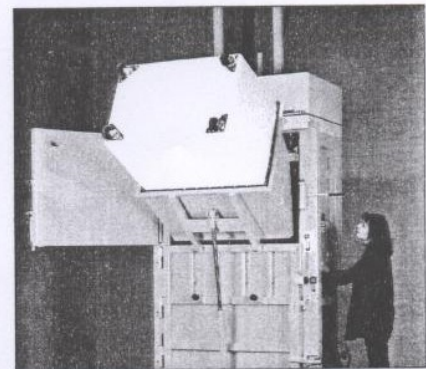


# 4-0 LC

# BRAMIDAN®



The machine is equipped with a safe two-hand operation. The operator is in a safe distance from the lift system, when the lift is in operation.



The lift system has a capacity of max. 150 kg. The container is easily emptied once the container is in the top position.

## Large capacity and easy handling

4-0 LC is suitable for companies, where the waste sources are located in different areas, and where mini-containers can be used for internal transport. The mini containers can easily be placed in the lift system.

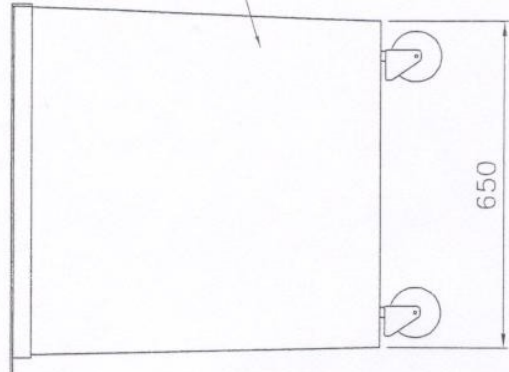
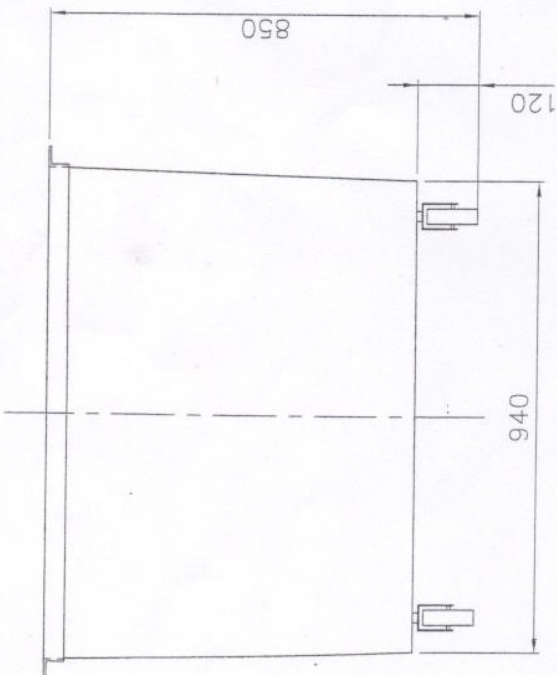
The machine can be placed in a central location and all users can empty the containers using the lift system, which is very easy to operate.

The machine can furthermore be filled manually if needed.

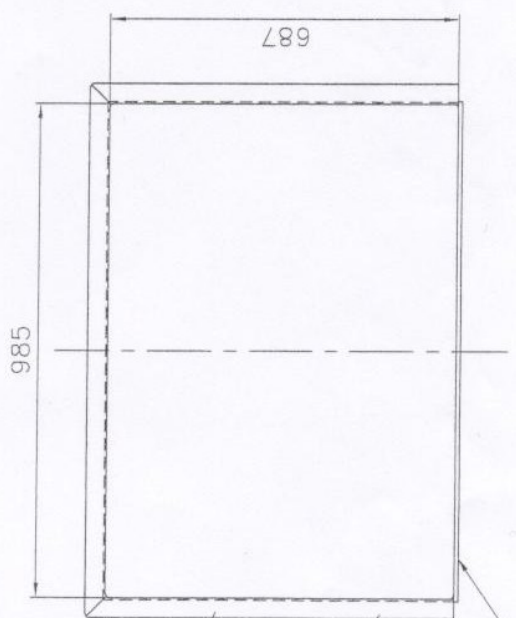
## Technical specifications



Model	4-0 LC
Compression (ton)	16
Electricity	3x230/400V 16A 4,0 kW
Cycle time (sec)	55
Dimensions LxWxH (mm)	1610 x 1730 x 3880
Filling height (mm)	1450
Stroke (mm)	1200
Weight (kg)	1440
Bale size LxWxH (mm)	1100 x 700 x 1200
Bale weight (kg) (cardboard)	100-350
Bale weight (kg) (plastic)	100-400
Noise level (dB)	75-79



GLASS FIBRE  
CONTAINER



TOP FRAME

L. 40 x 40 x 4

PL. 40 x 8

ANTAL	POS. NR.	BESKRIVELSE	MATR. / DIM. / TEGN. NR.
MÅL :	PAPIR :	BRAMIDAN	Industrivej 69 DK-8740 Brønning Tlf. +45 70131777 Fax +45 70131777
1:10	A3	BALE PRESS, 4-OLC CONTAINER WITH TOP FRAME	
MASKINTYPE		TEGNINGS NR.	REV.
PEQ		PEQ31010	0

REV.	DATE	UDF. AF	ECC	CHK. AF	ISSUED FOR CONSTRUCTION	BESKRIVELSE
0		ASP				



