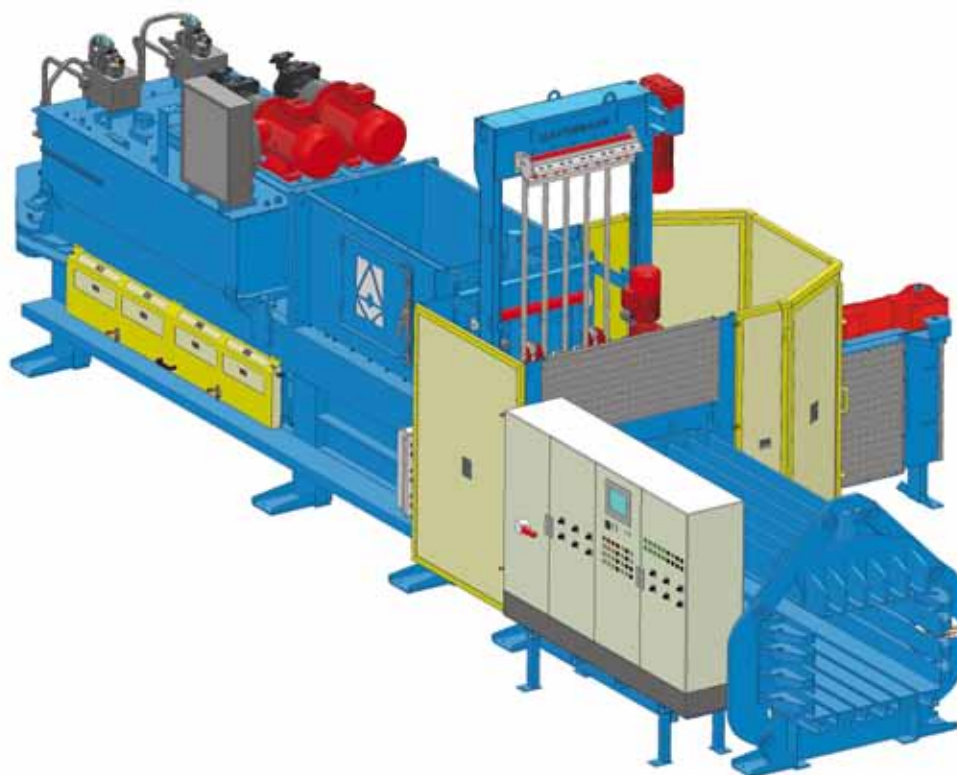


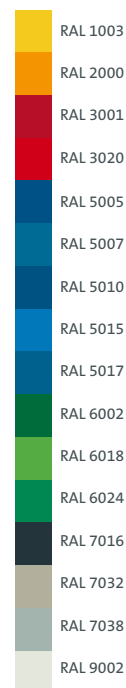


HORIZONTAL BALER TYPE AVOS 1810 RK

Innovation and tradition



Standard RAL-colours



Further RAL-colours on demand at extra charge.

Optimum output power by...

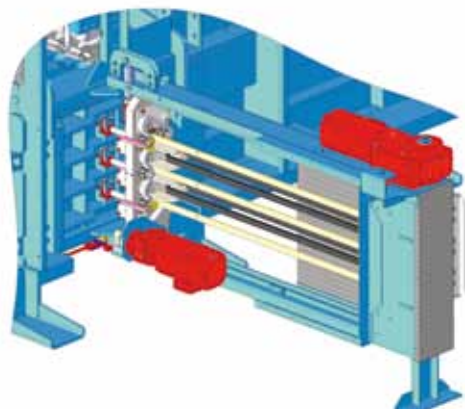
- ... programmable PLC control unit
- ... 5 programme selector switches
- ... separate heating, cooling and filter cycle for the hydraulic oil
- ... roller guided press-ram
- ... cross-binding

Optional special equipment:

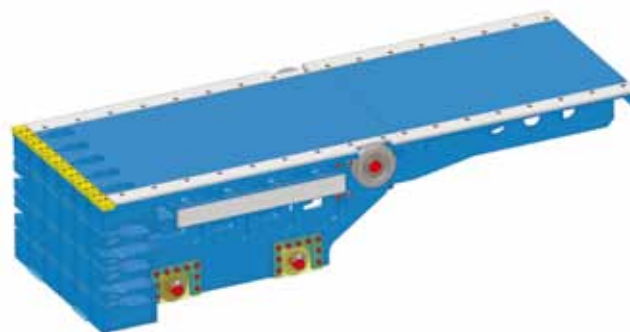
- ✓ Ruffler
- ✓ Bale slide
- ✓ Feeding chute
- ✓ Material re-holder
- ✓ Inclined conveyor belt
- ✓ Bin-lift device
- ✓ Wire end control
- ✓ Wire coil holder (400 kg)
- ✓ Perforator/rotary shredder
- ✓ Maintenance platform
- ✓ Operator protection system



■ Horizontal 3-fold binding



■ Press-ram with roller guiding



Effective, efficient and powerful

Efficiency and high serviceability in solid design: Thanks to the cross-binding a safe and optimum compaction of fine-grained and strongly expansive materials is possible. The high throughput and the redundant drive via two energy-saving, powerful hydraulic pumps allow a

substantial range of operations. Furthermore the state-of-the-art key transfer system guarantees highest safety standard for exemplary operating safety. Profit from these advantages and our know-how!

Technical data

	AVOS 1810 RK-90/80	AVOS 1810 RK-90/100	AVOS 1810 RK-110/100
Machine length	11200 mm	11200 mm	11200 mm
Machine width	2400 mm	2400 mm	2400 mm
Machine height	3900 mm	3900 mm	3900 mm
Feeding hopper cross section	1800 x 1000 mm	1800 x 1000 mm	1800 x 1000 mm
Dead weight approx.	29000 kg	29000 kg	30000 kg
Bale size (W x H)	1100 x 750 mm	1100 x 750 mm	1100 x 750 mm
Bale weight* up to	700 kg	750 kg	800 kg
Channel adjustment	3-sided automatically	3-sided automatically	3-sided automatically
Cycle time (empty)	10.2 sec	12.5 sec	12.5 sec
Idle speed capacity (theoretically)	476 m ³ /h	388 m ³ /h	388 m ³ /h
Throughput** 35 kg/m ³ (cardboard)	15.5 t/h	15.0 t/h	15.5 t/h
Throughput** 60 kg/m ³ (cardboard, paper)	22.5 t/h	20.0 t/h	21.0 t/h
Throughput** 100 kg/m ³ (newspapers)	33.0 t/h	29.0 t/h	30.0 t/h
Specific press force	97.0 N/cm ²	121.2 N/cm ²	121.2 N/cm ²
Press force	800 kN	1000 kN	1000 kN
Drive capacity	2 x 45 kW	2 x 45 kW	2 x 55 kW

* depending on bale length and material, ** relating to apparent weight

Valid for all machine types

Adjustable bale length; Binding: 5-fold vertically, 3-fold horizontally; Electricity: 3 x 400 V, N, PE/50 Hz