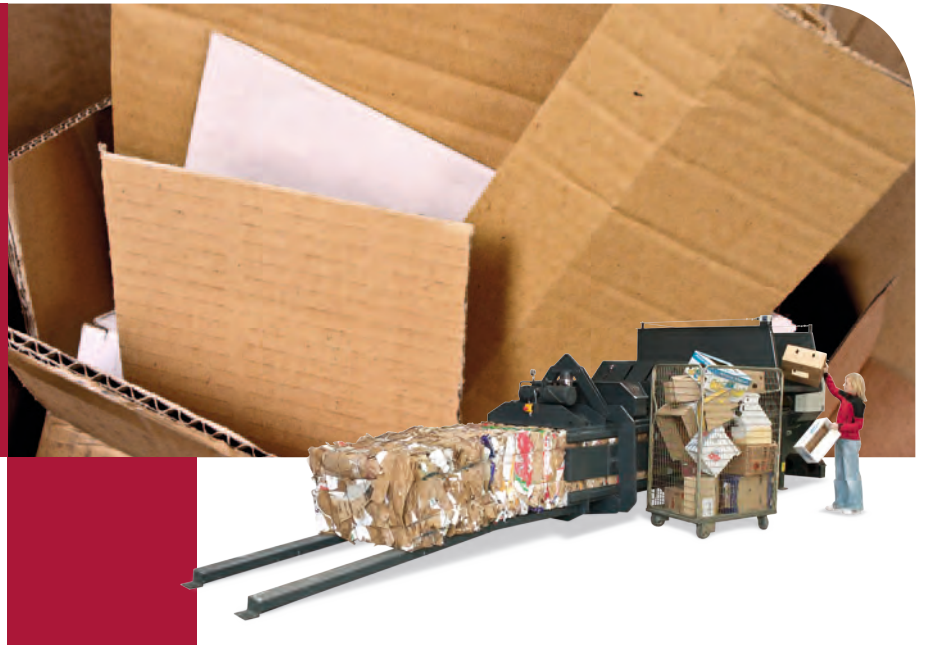


Horizontal balers HC50



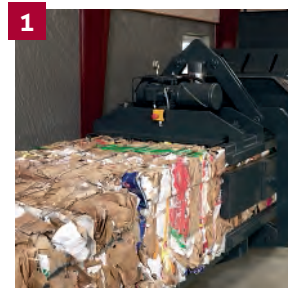
FOR LARGE VOLUMES OF WASTE

The HC50 is suitable for customers who have very large volumes of cardboard, plastic or paper.

The horizontal channel baler can be loaded continuously and the bales are tied automatically, when the selected bale length is reached.



Technical specifications	
Press force (t)	50
Power supply	3x400V 50Hz 50A
Motor (kW)	15
Noise level (dB)	74
Cycle time (sec)	32
Dimensions LxWxH (mm)	6780 x 2190 x 2550
Weight (kg)	8500
Filling opening LxW (mm)	1250 x 1050
Filling height (mm)	1500
Number of wires	4
Capacity (t/h)	0-4
Bale size LxWxH (mm)	1200 x 1100 x 700
Bale weight cardboard (kg)	400-450
Bale weight plastic (kg)	450-500



1 The bale is tied automatically. **2** The finished bales are pushed forward. **3** The baling channel adjusts automatically to keep the bale density constant. **4** The machine is equipped with an automatic light barrier that starts the pressing cycle.

- **High capacity**
Extra wide filling opening
- **Fully automatic solution**
Bales are tied automatically
- **Flexible output**
The bale length can be adjusted